

Model: CST750; Communication Square Tower

Structure type	Self-supporting square lattice bolted construction
Heights range	15m, 20m, 25m, 30m & 37m
Profile	Top width 750mm, and then tapering to 2500mm at base for 37m height
Members type	Rolled Steel Angle sections (RSA)
Finish	Hot dip galvanised with 85 microns minimum average coating
Usage	Civil Telecommunications
Antenna Loading	Up to 1.2m diameter dishes, mobile phone antennae and aerials
Climbing facility	External face mounted ladder
Feeder support facility	Feeder brackets on tower legs at 500mm intervals
Platforms	External rest platforms
Foundations	Reinforced concrete raft to suit all terrain and soil conditions

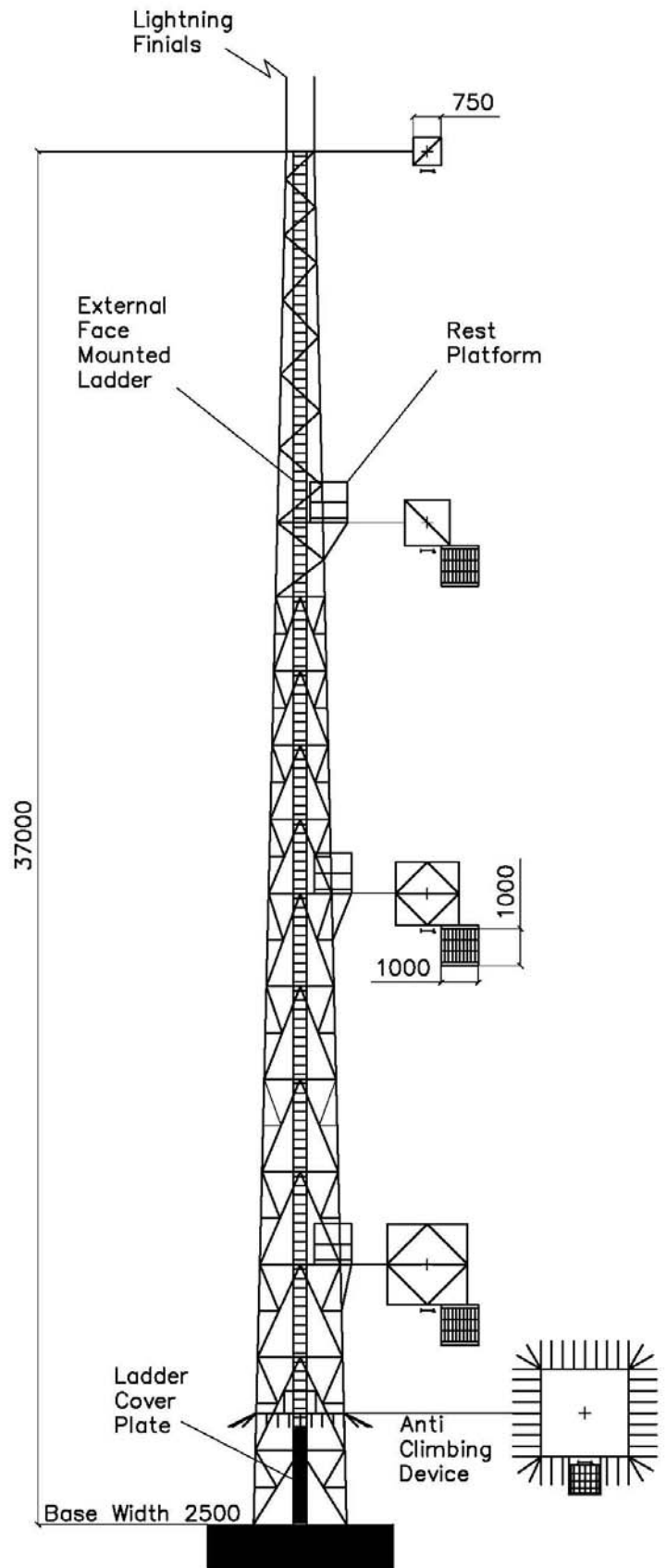


Model: CST750

- Tower design to the current British/Eurocode Standards for gusted wind speed of 50m/s
- All material to the current British/Eurocode Standards with yield stress of 275N/mm² for mild steel and 355N/mm² for high yield
- All bolts of grade 8.8 or equivalent supplied with one nut and one spring washer
- The tower structure and ladder will be trial assembled before galvanising to ensure perfect fit
- External rest platforms on right hand side of ladder with hand rails and open mesh flooring; at approximately 10m intervals
- After fabrication, marking and trial assembly all steelworks will be hot dip galvanised to current British/Eurocode Standards
- The tower is supplied with foundation grillage, including stubs and setting templates; alternatively the base module can be supplied with base plate and holding down bolts
- The tower is fitted with lightning finial rods and lifting points at the top and earth lugs on the bottom legs members
- Manufacturing quality conforms to BS EN ISO 9001

Optional Items:

- Anti climbing device (ACD) can be fitted to tower
- Feeder gantry from tower base to transmitter building
- Safety climbing device and accessories
- Ground Earth Kit
- Aircraft Warning Light System (AWLS)
- Paint material and/or shop painting



EDS Consultancy Limited

T: +44 (0) 20 8004 7731

E: eds@eds-consultancy.com | W: www.eds-consultancy.com