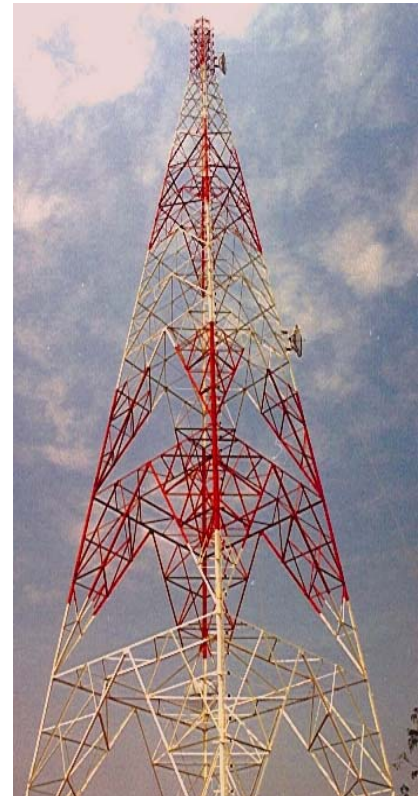


## Model: CST2000; Communication Square Tower

Structure type	Self-supporting square lattice bolted construction
Maximum Height	100m
Profile	Top 10m parallel, 2000mm wide, and then tapering to 18200mm at base
Members type	Rolled Steel Angle sections (RSA)
Finish	Hot dip galvanised with 85 microns minimum average coating
Usage	Civil Telecommunications & Mobile Phone Operators
Antenna Loading	Up to 3.0m diameter dishes, mobile phone antennae and aerials
Climbing facility	External leg mounted on internal ladder
Feeder support facility	Feeder brackets on tower legs or ladder
Platforms	External or internal rest platforms depending on ladder position
Foundations	Reinforced concrete individual footings with piles if necessary to suit all terrain and soil conditions

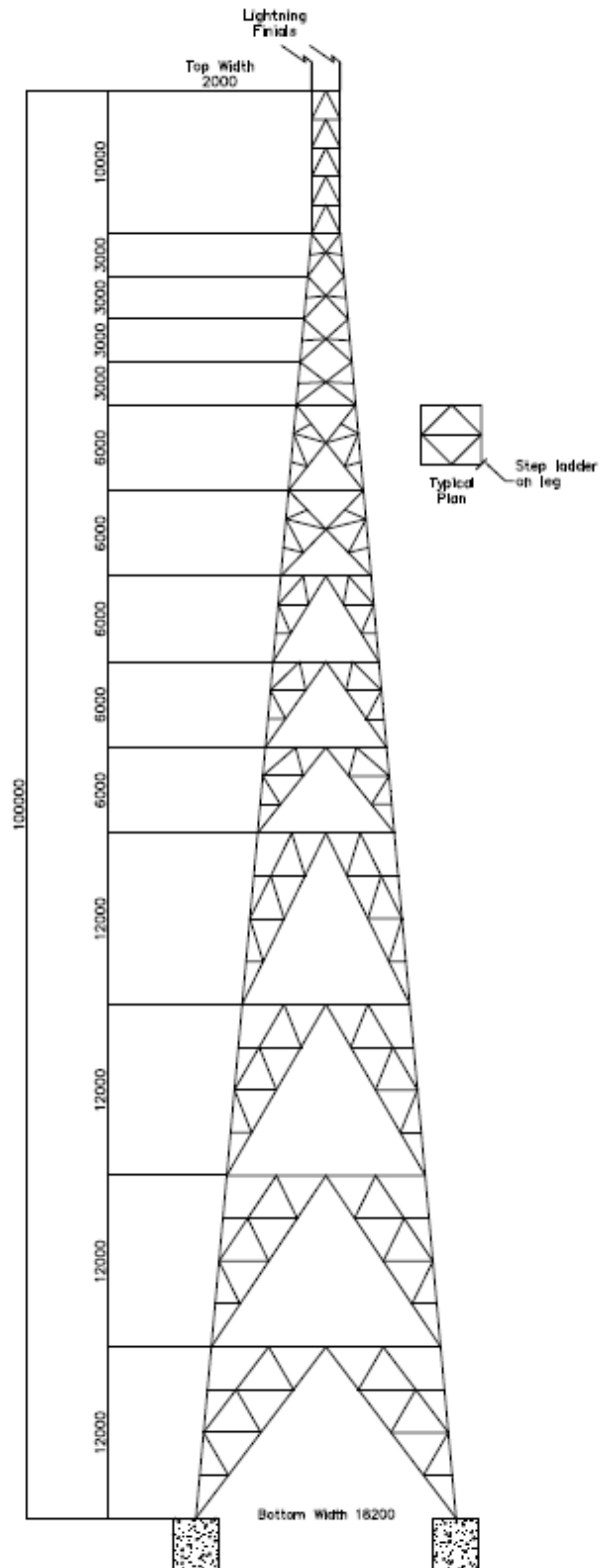


# Model: CST2000

- Tower design to the current British/Eurocode Standards for gusted wind speed of 50m/s
- All material to the current British/Eurocode Standards with yield stress of 275N/mm<sup>2</sup> for mild steel and 355N/mm<sup>2</sup> for high yield
- All bolts of grade 8.8 or equivalent supplied with one nut and one spring washer
- The tower structure and ladder will be trial assembled before galvanising to ensure perfect fit
- The tower structure could be equipped with internal ladder, feeder management system and internal rest or working platforms at 5m intervals
- After fabrication, marking and trial assembly all steelworks will be hot dip galvanised to current British/Eurocode Standards
- The tower is supplied with foundation grillage, including stubs and setting templates; alternatively the base module can be supplied with base plate and holding down bolts
- The tower is fitted with lightning finial rods and lifting points at the top and earth lugs on the bottom leg members
- Manufacturing quality conforms to BS EN ISO 9001

## Optional Items:

- Anti climbing device (ACD) can be fitted to tower
- Feeder gantry from tower base to transmitter building
- Safety climbing device and accessories
- Ground Earth Kit
- Aircraft Warning Light System (AWLS)
- Paint material and/or shop painting



**EDS Consultancy Limited**

T: +44 (0) 20 8004 7731

E: [eds@eds-consultancy.com](mailto:eds@eds-consultancy.com) | W: [www.eds-consultancy.com](http://www.eds-consultancy.com)